

PLAZA RESORT BONAIRE

J.A. Abraham Boulevard 80, Kralendijk
Bonaire



Enhanced by more than 300,000 tropical plants and trees, Plaza Resort Bonaire leisurely sprawls over 12 acres of beautifully landscaped grounds - in fact the prettiest on the island. A private marina is lined by spacious villas and suites, and a pearl-white beach stretches from one end of the property to the other.

Junior Suite Laguna

Period of Validity: January 2 - April 9, 2011

Single	Double	Triple	Quad
295.00	148.00	112.00	94.00

Premium Suite Laguna

Period of Validity: January 2 - April 9, 2011

Triple	Quad	Quint	Sixtpl
350.00	175.00	130.00	107.00

Junior Suite Laguna

Period of Validity: April 10 - December 17, 2011

Single	Double	Triple	Quad
258.00	129.00	99.00	84.00

Premium Suite Laguna

Period of Validity: April 10 - December 17, 2011

Triple	Quad	Quint	Sixtpl
308.00	154.00	116.00	97.00



For non-local pax: Add USD 6.50 p/p Room Tax p/n

Breakfast

- Adult, Afs. 35.00
- Child, Afs. 18.00

Dinner

- Adult, Afs. 69.00
- Child, Afs. 35.00

Lunch

- Adult, Afs. 46.00
- Child, Afs. 23.00

General Inclusions

- Room, Tax, Service Charge and Energy Surcharge, Welcome drink

Cancellations within 45 days during Thanksgiving & Carnival period will have a penalty of 3 nights.

DIVI FLAMINGO BEACH RESORT

J.A. Abraham Blvd. 40, Kralendijk
Bonaire



Colorful, unpretentious, and fun- the Divi Flamingo Beach Resort and Casino is the perfect base for vacationers drawn to the sleepy island of Bonaire and world-class Caribbean scuba diving. Spacious oceanfront and gardenview guestrooms and suites are gaily decorated in bright, tropical colors. Private balconies overlook the Caribbean Sea and invite guests to relax after a day of diving.



Standard Room

Period of Validity: January 1 - March 31, 2011

Single	Double	Triple	Quad
345.00	173.00	141.00	126.00

Studio (Max 6 pax)

Period of Validity: January 1 - March 31, 2011

Single	Double	Triple	Quad	Quint	Sixtpl
462.00	231.00	180.00	155.00	140.00	130.00

Standard Room

Period of Validity: April 1 - December 23, 2011

Single	Double	Triple	Quad
297.00	149.00	119.00	104.00

Studio (Max 6 pax)

Period of Validity: April 1 - December 23, 2011

Single	Double	Triple	Quad	Quint	Sixtpl
392.00	196.00	150.00	128.00	114.00	105.00

General Inclusions

- Room Tax, Service Charge and Energy Surcharge

Other Information

- Children up to 15 years are free in room with existing bedding. Maximum of 2 children per room.
- Between Apr 1 - Dec 23, 2010 children eat free from the children's menu when accompanied by paying adult.

Meal Plan

- Breakfast: Adult FI 35.00 / Child 3-12yrs FI 29.00
- Lunch: Adult FI 42.00 / Child 3-12yrs FI 29.00
- Dinner: Adult FI 74.00 / Child 3-12yrs FI 33.00

For non-local pax: Add USD 6.50 p/p Room Tax p/n

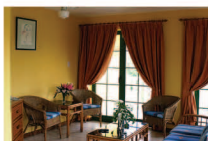


BUDDY DIVE RESORT

Kaya Gob. N. Debrot 85, Kralendijk
Bonaire



This resort is complete with four modern buildings housing spacious one, two and three bedroom apartments, a full service dive center, activity desk, two swimming pools, restaurant, pool bar, vehicle rentals and the famous drive-thru air and Nitro fill station. Built with active people in mind, Buddy's knows exactly what is needed to make guests comfortable both during their busy day of diving and exploring, and after.

**Three Bedroom Apartment (Max 7 pax)**

Period of Validity: Dec18, 2010-Apr29, 2011

4-Pax	5-Pax	6-Pax	7-Pax
173.00	139.00	116.00	107.00

Three Bedroom Apartment (Max 7 pax)

Period of Validity: Apr30-Dec23, 2011

4-Pax	5-Pax	6-Pax	7-Pax
156.00	125.00	104.00	98.00

General Inclusions

- Room and Tax

For non-local pax:

Add USD 6.50 p/p Room Tax p/n

Hotel Room (max. 2pax)

Period of Validity:

December 18, 2010 - April 29, 2011

Single	Double
242.00	121.00

One Bedroom Apartment (max. 3pax)

Period of Validity:

December 18, 2010 - April 29, 2011

2-Pax	3-Pax
180.00	139.00

Two Bedroom Apartment (Max 5 pax)

Period of Validity:

December 18, 2010 - April 29, 2011

4-Pax	5-Pax
141.00	124.00

Studio (Max 2 pax)

Period of Validity:

December 18, 2010 - April 29, 2011

Single	Double
312.00	156.00

Hotel Room (max. 2pax)

Period of Validity:

April 30 - December 23, 2011

Single	Double
218.00	109.00

One Bedroom Apartment (max. 3pax)

Period of Validity:

April 30 - December 23, 2011

2-Pax	3-Pax
162.00	127.00

Two Bedroom Apartment (Max 5 pax)

Period of Validity:

April 30 - December 23, 2011

4-Pax	5-Pax
127.00	113.00

Studio (Max 2 pax)

Period of Validity:

April 30 - December 23, 2011

Single	Double
281.00	141.00

Cancellation Policy: 25% of ttl booking amount when xxld 56 days in advance
50% 28 days in advance / 75% 14 days ub advance / 100% on arr same day

CAPTAIN DON'S HABITAT

Kaya Gob. N. Debrot 103, Kralendijk
Bonaire



A world renowned resort catering to today's most demanding diver and vacationers. Set amidst lush green gardens with colorful decor and landscaping we now offer the comfort of 3 deluxe varieties of accommodations, fresh water pool, great dining and entertainment options, friendly service, and of course the best dive in the Caribbean 24 hours per day, 365 days per year.

**General Inclusions**

- Room and sales tax and Energy surcharge

Note

- Extra person rate may only be used with Habitat Cottage / Flamboyant Apart / Ocean Front Villa / Deluxe Ocean View or Jr. Suite DBL
- Maximum 2 children under 12 Free when sharing room with 2 paying adults (not in the Villa Ocean rooms)

Cancellation policy:

2 Nights penalty if cancelled within 30 days of arrival.

Non-Antillean / Aruban rates are available upon request.

Antillean / Aruban Rates PER ROOM

Period of Validity:

A) December 19, 2010 - March 31, 2011 / B) April 1 - December 18, 2011

Room Type	Room Rate A	Room Rate B
Habitat 1/1 SGL Occupancy	210.00	158.00
Habitat 1/1 DBL Occupancy	266.00	203.00
Habitat 2/2 DBL Occupancy	327.00	273.00
Habitat 2/2 TPL Occupancy	351.00	295.00
Habitat 2/2 QUAD Occupancy	374.00	320.00
Flamboyant 2/2 Apt DBL Occupancy	279.00	230.00
Flamboyant 2/2 Apt TPL Occupancy	304.00	255.00
Flamboyant 2/2 Apt QUAD Occupancy	329.00	277.00
Ocean Front Villa (4 pax)	468.00	410.00
Ocean Front Villa (6 pax)	628.00	567.00
Deluxe Ocean View SGL Occupancy	185.00	142.00
Deluxe Ocean View DBL Occupancy	239.00	187.00
Deluxe Jr. Suite SGL Occupancy	212.00	196.00
Deluxe Jr. Suite DBL Occupancy	277.00	221.00
Extra Person (Habitat/Flamboyant Apt/Ocean View)	79.00	70.00

COCO PALM GARDEN & CASA OLEANDER

Kaya Statius van Eps 9, Kralendijk
Bonaire



Coco Palm Garden & Casa Oleander are the ideal Bonaire self catering vacation rentals for scuba divers and windsurfers - for everybody who is looking for tranquility and privacy away from the big hotels.. Our accommodations are self contained vacation homes (studios, apartments, villa) in the quiet residential area Belnem, south of the airport and Kralendijk. These beautiful self catering budget minded vacation rentals are surrounded by tropical gardens, each lodging unit has its own private porch and garden space with hammock and sun bed. Your vacation rentals get away in the Caribbean for scuba diving, snorkling and/or windsurfing in the crystal clear water of the Caribbean.... and on your dive free day Golf in the Kunuku.

Studio

Period of Validity: January - December 2011

Single	Double
128.00	64.00



One Bedroom Apartment

Period of Validity: January - December 2011

Single	Double	Triple	Quad
164.00	82.00	55.00	41.00



Two Bedroom Apartment

Period of Validity: January - December 2011

Single	Double	Triple	Quad
210.00	105.00	76.00	62.00

General Inclusions

- Room and Sales Tax, Use of air-conditioning

Note: Non-local tax

Add USD 5.50 p/p Room Tax p/n

Note:

Pre-payment required prior to arrival of guest

CARIBBEAN CLUB BONAIRE

Boulevard Santa Barbara 50
Bonaire



The Caribbean Club Bonaire is a friendly, full-service resort with a wide variety of accomodations, dive activities and ECO tours. In the center of the resort is the swimming pool and sun deck. The Hilltop restaurant and bar overlook the pool area. The Cuba Room is available for group meetings, conferences and private parties in air-conditioned comfort.



Studio Garden View (Max. 2pax)

Period of Validity:
December 18, 2010-April 29, 2011

Single	Double
159.00	80.00

Studio Garden View (Max. 2pax)

Period of Validity:
April 30 - December 23, 2011

Single	Double
143.00	72.00

Cottage 1-Bedroom (Max. 3pax)

Period of Validity:
December 18, 2010-April 29, 2011

2-pax
119.00

Cottage 1-Bedroom (Max. 3pax)

Period of Validity:
April 30 - December 23, 2011

2-pax
107.00

Cottage 2-Bedroom (Max. 5pax)

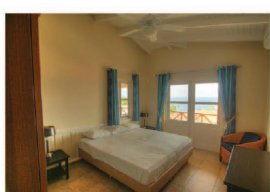
Period of Validity:
December 18, 2010-April 29, 2011

3-pax	4-pax
90.00	75.00

Cottage 2-Bedroom (Max. 5pax)

Period of Validity:
April 30 - December 23, 2011

3-pax	4-pax
81.00	61.00



General Inclusions

- Room and Tax

Non-Antillean/Aruban rates are available upon request. For non-local pax:

Add USD 6.50 p/p Room Tax p/n

Cancellation Policy: 25% of ttl booking amount when xxld 56 days in adv / 50% when 28 days in adv and 75% when 14 days in adv / 100% or arr day

LAGOEN HILL BONAIRE

Kaya Lagoen, Kralendijk
Bonaire



Located in the rolling hills near Lagoen Bay, a quiet residential setting with great island views of Bonaire. Only 2 miles from the capital city of Kralendijk. The Resort features 30 private cottages, set among lush tropical gardens. Bonaire Lagoen Hill offers you a tranquil and natural setting with a spectacular view of the island. Perfect for a peaceful island getaway.

Studio Standard (max. 2pax)

Period of Validity: Dec22, 2010-Dec15, 2011

Single	Double
117.00	59.00

One Bedroom Cottage (Max 3 ad/2 ad+2chd)

Period of Validity: Dec22, 2010-Dec15, 2011

Single	Double	Triple
151.00	76.00	63.00

Two Bedroom Cottage (max. 5 pax)

Period of Validity: Dec22, 2010-Dec15, 2011

4 Pax	5 Pax
49.00	47.00

Three Bedroom Cottage (max6 pax)

Period of Validity: Dec22, 2010-Dec15, 2011

4 Pax	5 Pax
69.00	55.00

General Inclusions

- Room and tax

Additional Information

Children 0-5 years eat complimentary at any buffet meal at the Dock of the Bay Restaurant.

Note: Non-local tax

Add USD 6.50 p/p Room Tax p/n

